



Main Street Station Looks to Modernize Transport Hub with Striking Views and Natural Light.

A historic train station in downtown Richmond, VA teams with local architects, builders, and GBA Architectural Products to create stunning public interior.

Architect:

SMBW Architects

General Contractor:

Taylor and Parrish, Inc

Owner:

City of Richmond Department
of General Services

Products:

GlassWalk™ Structural Floor
and Glass Pavers

Opportunity

Main Street Station was built in 1901 to declare to the country the city of Richmond's worth. By the 1920s, it had become a bustling train station. A few decades later, tragedy struck when Hurricane Agnes flooded the station. Following the hurricane, multiple fires took out portions of the station. Through all the hardships the station remained functional.

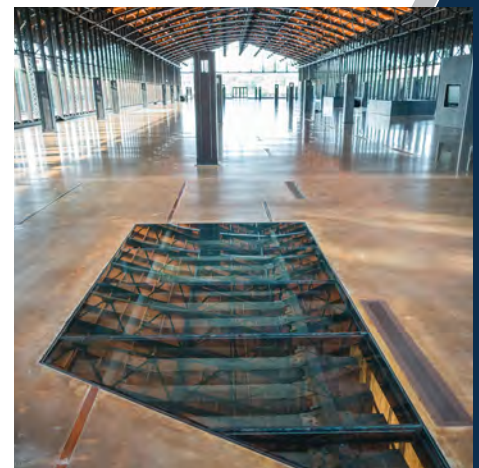
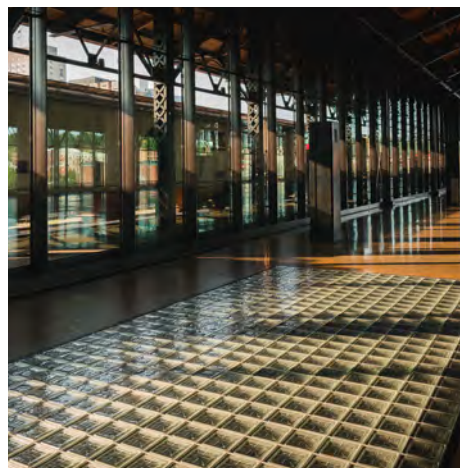
In 2018, the city looked to enhance revenue and vitality at the facility. The plan was to create an entertainment and events facility highlighting the historical significance of the station. The new facility would not impact the primary function of the station which was to be a premiere multi-modal transportation facility.

Solution

The design was to transform the original train shed with its exposed steel and wood roof into a modern multi-use venue. Plans called for a food market, restaurants, and cultural attractions. Floor to ceiling windows were installed to allow breathtaking views of the outside city.

[View](#) more Main Street Station photos in our website gallery.

Structural glass floors were desired in several locations. With the flexibility of GBA Architectural Products + Services GlassWalk™ products, the architects were able to fulfill their design intent. Two large glass paver floors were supplied and installed.



Outcome

The glass paver floors created an exciting appearance on the main floor and supplied the lower spaces with plenty of natural light. GBA also collaborated on a vision to show the components and construction of the original train tracks. To do that, a clear glass floor was created using GlassWalk™ Structural Glass and framing elements. With the exhibit just below the glass, it is protected yet clearly visible producing a unique learning experience for all visitors.



GBA Architectural Products + Services
1213 Medina Road, Medina, OH 44256
(877) 280-7700
sales@gbaproducts.com
gbaproducts.com

Follow us on:



GBA Architectural Products + Services is a trusted resource of light penetrating surfaces to the architectural design and construction communities. For more information about how GBA can help you realize your vision on your next project, call a glass block expert on (877) 280-7700.